

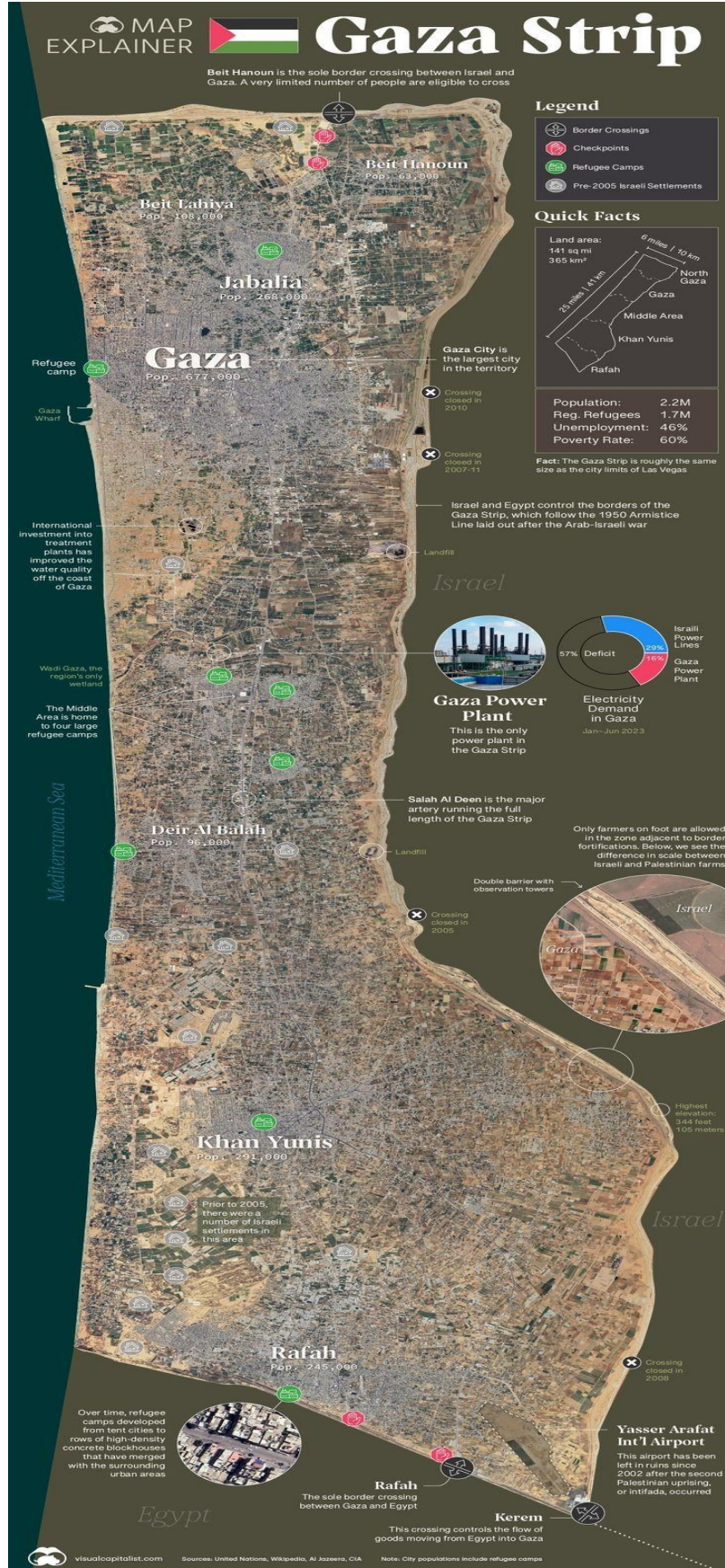
Gaza

MAP EXPLAINER



Gaza Strip

Beit Hanoun is the sole border crossing between Israel and Gaza. A very limited number of people are eligible to cross



Legend

- Border Crossings
- Checkpoints
- Refugee Camps
- Pre-2005 Israeli Settlements

Quick Facts



Population:	2.2M
Reg. Refugees:	1.7M
Unemployment:	49%
Poverty Rate:	60%

Fact: The Gaza Strip is roughly the same size as the city limits of Las Vegas

Beit Hanoun
Pop. 63,000

Beit Lahiya
Pop. 198,000

Jabalia
Pop. 268,000

Gaza
Pop. 677,000

Deir Al Balah
Pop. 96,000

Khan Yunis
Pop. 231,000

Rafah
Pop. 245,000

Gaza City is the largest city in the territory

Crossing closed in 2010

Crossing closed in 2007-11

Israel and Egypt control the borders of the Gaza Strip, which follow the 1950 Armistice Line laid out after the Arab-Israeli war

Israel



Gaza Power Plant
This is the only power plant in the Gaza Strip



Electricity Demand in Gaza
Jan-Jun 2023

Salah Al Deen is the major artery running the full length of the Gaza Strip

Only farmers on foot are allowed in the zone adjacent to border fortifications. Below, we see the difference in scale between Israeli and Palestinian farms

Double barrier with observation towers

Crossing closed in 2005



Highest elevation: 344 feet / 105 meters

International investment into treatment plants has improved the water quality off the coast of Gaza

Wadi Gaza, the region's only wetland

The Middle Area is home to four large refugee camps

Mediterranean Sea

Prior to 2005, there were a number of Israeli settlements in this area

Over time, refugee camps developed from tent cities to rows of high-density concrete blockhouses that have merged with the surrounding urban areas



Rafah
The sole border crossing between Gaza and Egypt

Crossing closed in 2008

Yasser Arafat Int'l Airport
This airport has been left in ruins since 2002 after the second Palestinian uprising, or intifada, occurred

Kerem
This crossing controls the flow of goods moving from Egypt into Gaza

Gaza

Gaza strip is the southern region of the Palestinian coastal plain on the Mediterranean Sea. In the form of a narrow strip northeast of the Sinai Peninsula.

Its borders with **occupied Palestine** are 51 km long, and its borders with **Egypt** are 11 km long near the city of Rafah.

The Zionist forces did not control it in the 1948 war, and it did not become within the borders of the Zionist entity.

It constitutes approximately 1.33% of the area of Palestine. Gaza strip is 41 kilometers long, 6 to 12 kilometers wide, and has a total area of 365 square kilometers. About 3 million Palestinians live in Gaza strip, making the population density remarkably high.

The main river in Gaza strip is Wadi Gaza, and the Wadi Gaza Nature Reserve was established around it to protect the only coastal wetlands in the Strip.

Khan Yunis is located 7 km northeast of **Rafah**, and several towns are located around **Deir al-Balah** along the coast between **Khan Yunis** and **Gaza City**. **Beit Lahia** and **Beit Hanoun** are located to the north and northeast of **Gaza City**, respectively.

The city of Gaza was founded by the **Canaanites** in the fifteenth century BC.

It was occupied by many invaders, such as the **Pharaohs, Greeks, Romans, Byzantines, Ottomans,** and others.

The first time the city was mentioned was in a manuscript by **Pharaoh Thutmose III** (15th century BC), and its name was also mentioned in the **Amarna letters**.

After 300 years of Pharaonic occupation of the city, a tribe of **Philistines** descended and inhabited the city and the surrounding area, in the year 635 AD.

The Muslims, led by the companion **Amr ibn al-Aas**, entered the city and it became an important Islamic center, especially since it is famous for the presence of the grave of the second grandfather of the Prophet, may Allah bless him and grant him peace, **Hashim ibn Abd Manaf**, in it, and therefore it is called **Gaza Hashim**.

Imam Al-Shafi'i was born there in the year 150 AH 767 AD, one of the four imams.

The **Europeans** took control of the city during the Crusades, but it returned under Muslim rule after **Saladin** defeated them in the **Battle of Hattin** in 1187.

Gaza fell into the hands of British forces during **World War I**, and became part of the British Mandate of Palestine. After the 1948 war, **Egypt** took over the administration of the lands of Gaza strip.

The **criminal Zionist entity** occupied Gaza strip in 1967 (the setback), and in 1993, the city was transferred to the Palestinian National Authority.

After the 2006 elections, Gaza came under the rule of the Islamic resistance movement **Hamas**.

Since then, Gaza has been subjected to a complete land, sea and air **blockade** from the criminal Zionist entity and neighboring countries, which prevents people and goods from entering or exiting.

Gaza cities:

Gaza City, Rafah City, Beit Hanoun City, Jabalia City, Khan Yunis City, Deir al-Balah City.

It has now been under fire since the 7th of October, and more than 12,000 have been martyred so far, most of them children, in full view of the world, and no one is doing anything.





